

UP-TO-DATE 4D ECHOCARDIOGRAPHY INTENSIVE HANDS-ON 4D TTE & TOE ECHO COURSE

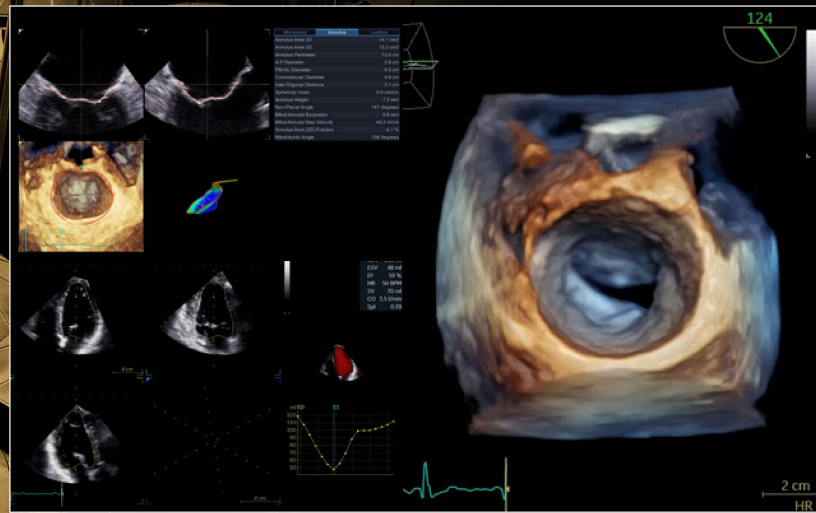
19-20 OCTOBER 2024

EUROPEAN INTERBALKAN MEDICAL CENTER

THESSALONIKI / GREECE



PCD
INVENTICS A.E. / Medevents.gr
T. 2310 474 400 / E. info@medevents.gr / W. www.medevents.gr
GNTD License: 0933E6000074600



COURSE DIRECTORS



PROF. LUIGI P. BADANO



DR. K. PAPAPOULOS

Up-To-Date 4D Echocardiography: Intensive hands-on 4D TTE and TOE echo course October 19th – 20th 2024

Venue: European Interbalkan Medical Center, Thessaloniki, Greece

Course Directors: Prof Luigi Badano, Dr Konstantinos Papadopoulos

Aim of the course: This course addresses to all 4D echo users and aims at fully understand the best way to acquire and analyze patients using the 4D echocardiography.

Registration

-Physical attendance & 1 week participation at the echocardiography department of Interbalkan center (14-18/10/2024), restricted to 2 persons: includes education on EchoPAC workstation and live scanning on vivid E95 machines with 4Vc probe, coffee breaks, 2 lunches, 1 dinner and 2 certificates, one from the course with EACCME® points and one from the hospital as fellowship program (**1000.00**)

-Physical attendance & 1 week participation at the echocardiography department of Interbalkan center (21-25/10/2024), restricted to 2 persons : includes education on EchoPAC workstation and live scanning on vivid E95 machines with 4Vc probe, coffee breaks, 2 lunches, 1 dinner and 2 certificates, one from the course with EACCME® points and one from the hospital as fellowship program (**1000.00**)

-On-site hands-on registration (physical attendance): includes education on EchoPAC workstation and live scanning on vivid E95 machines with 4Vc probe, coffee breaks, 2 lunches, 1 dinner and advanced certificate of education with credits of ECMECs accredited by the European Accreditation Council for Continuing Medical Education EACCME® (**500.00**)

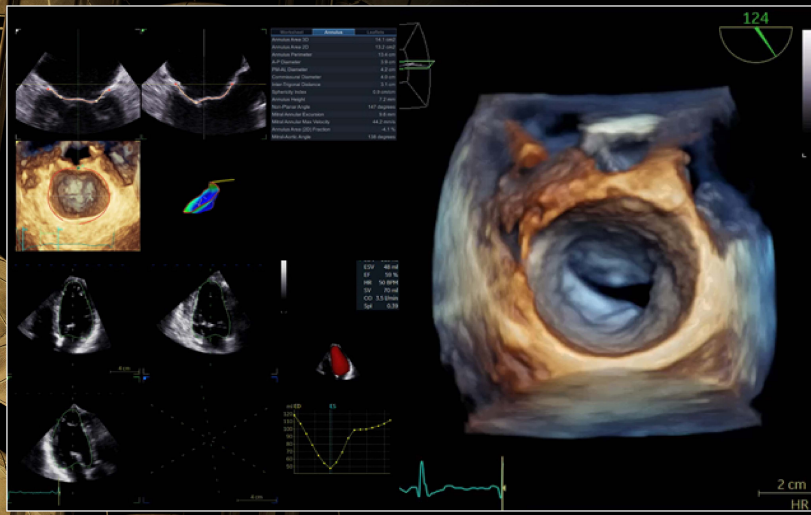
UP-TO-DATE 4D ECHOCARDIOGRAPHY

INTENSIVE HANDS-ON 4D TTE & TOE ECHO COURSE

19-20 OCTOBER 2024

EUROPEAN INTERBALKAN MEDICAL CENTER

THESSALONIKI / GREECE



PCD
INVENTICS A.E. / Medevents.gr
T. 2310 474 400 / E. info@medevents.gr / W. www.medevents.gr
GNTD License: 0933E6000074600

COURSE DIRECTORS



PROF. LUIGI P. BADANO



DR. K. PAPADOPOULOS



-Virtual hands-on registration: includes education on virtual EchoPAC workstation platforms (remotely from your PC) and advanced certificate of education with with credits of ECMECs accredited by the EACCME® **(350.00)**

-Join online registration: includes online attendance of the course with the ability to interact but not hands-on training and basic certificate of attendance with with credits of ECMECs accredited by the EACCME® **(150.00)**

* registration does not include transfer from and to airport and accommodation

* Cancellation received after September 1st, no refund

For **company/group registrations** or in case of invoice, please contact us at info@medevents.gr and do not fill in the online form. The company registration service enables you to register your delegates and get an invoice.

Organized by University of Milano in collaboration with Inventics S.A.

<http://www.inventics.net/>

Correspondence:

Konstantinos Papadopoulos, MD, PhD, FESC, FEACVI

Mob: +306937435062

Email: papadocardio@gmail.com

UP-TO-DATE 4D ECHOCARDIOGRAPHY INTENSIVE HANDS-ON 4D TTE & TOE ECHO COURSE

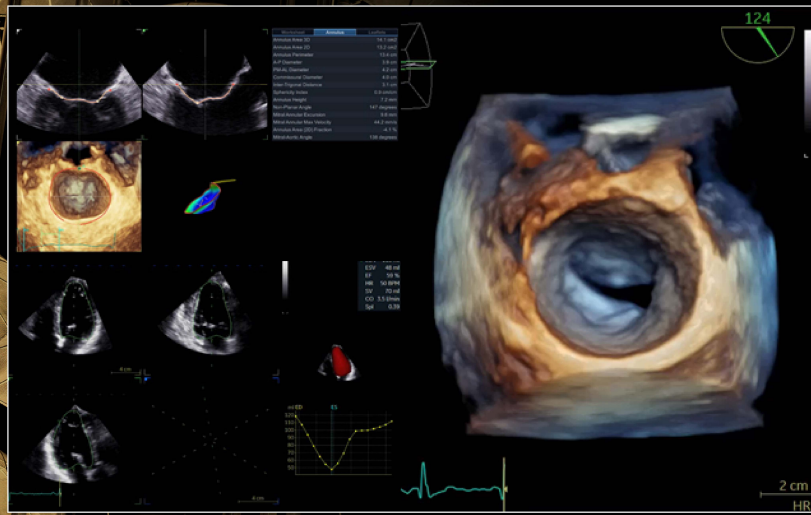
19-20 OCTOBER 2024

EUROPEAN INTERBALKAN MEDICAL CENTER

THESSALONIKI / GREECE



PCD
INVENTICS A.E. / Medevents.gr
T. 2310 474 400 / E. info@medevents.gr / W. www.medevents.gr
GNTD License: 0933E60000074600



COURSE DIRECTORS



PROF. LUIGI P. BADANO



DR. K. PAPAPOPOULOS

Course program

1st Day: Chambers evaluation

- | | |
|-------------|---|
| 08:30-09:00 | Welcome: Connection of participants to EchoPAC |
| 09:00-09:30 | Basics of 4D echocardiography. How to apply the method in routine practice (lecture)
K. Papadopoulos |
| 09:30-10:30 | Workstation session I: Learn how to optimize my 4D images in EchoPAC
K. Benekos |
| 10:30-11:00 | How to assess left ventricle and left atrium with 4D (lecture)
L. Badano |
| 11:00-11:15 | Coffee Break |
| 11:15-11:45 | Live session I: LV acquisition and assessment on GE E95 machine
K. Papadopoulos |
| 11:45-13:30 | Workstation session II: LV/LA assessment (Multislice, Triplane, 4D AutoLVQ, 4D AutoLAQ, AFI LA)
LV assessment: K. Papadopoulos
LA assessment: L. Badano |

UP-TO-DATE 4D ECHOCARDIOGRAPHY INTENSIVE HANDS-ON 4D TTE & TOE ECHO COURSE

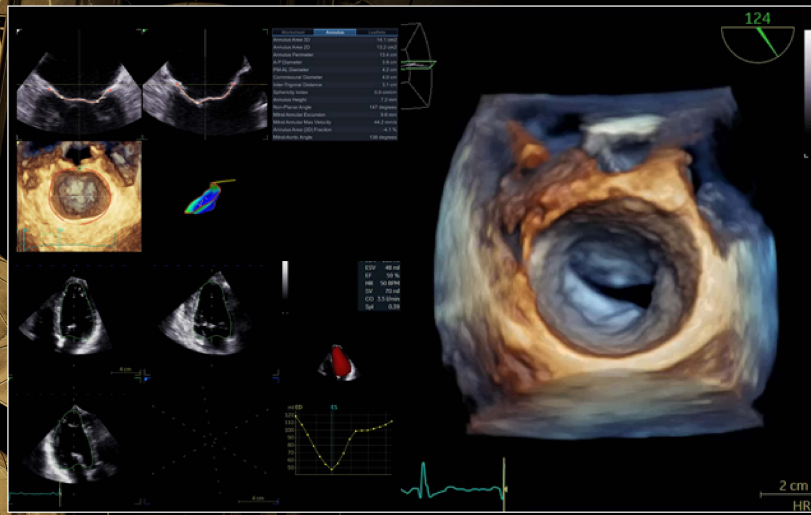
19-20 OCTOBER 2024

EUROPEAN INTERBALKAN MEDICAL CENTER

THESSALONIKI / GREECE



PCD
INVENTICS A.E. / Medevents.gr
T. 2310 474 400 / E. info@medevents.gr / W. www.medevents.gr
GNTD License: 0933E60000074600



COURSE DIRECTORS



PROF. LUIGI P. BADANO



DR. K. PAPAPOPOULOS



1st Day: Chambers evaluation

- | | |
|-------------|--|
| 13:30-14:00 | How to assess left ventricle with 2D AFI, triplane AFI
Myocardial work, 4D strain (lecture)
K. Papadopoulos |
| 14:00-14:45 | Lunch Break (Live scanning on Vivid E95 during the break) |
| 14:45-16:15 | Workstation session III: LV assessment
(triplane AFI-Myocardial work, 4D strain)
K. Papadopoulos |
| 16:15-16:30 | 4D Stress echocardiography. Feasibility and added value of the
method (lecture)
L. Badano |
| 16:30-17:00 | Evaluation of right ventricle by 4D echocardiography (lecture)
L. Badano |
| 17:00-17:15 | Live session II: RV acquisition
K. Papadopoulos |
| 17:15-17:45 | Coffee break (Live scanning on Vivid E95 during the break) |
| 17:45-19:00 | Workstation session IV: RV assessment
L. Badano |
| 19:30 | Dinner |

UP-TO-DATE 4D ECHOCARDIOGRAPHY INTENSIVE HANDS-ON 4D TTE & TOE ECHO COURSE

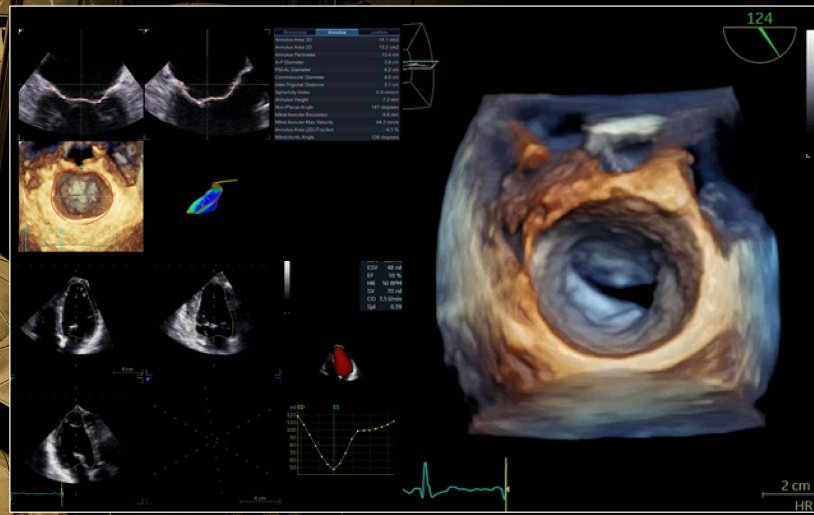
19-20 OCTOBER 2024

EUROPEAN INTERBALKAN MEDICAL CENTER

THESSALONIKI / GREECE



PCD
INVENTICS A.E. / Medevents.gr
T. 2310 474 400 / E. info@medevents.gr / W. www.medevents.gr
GNTD License: 0933E60000074600



COURSE DIRECTORS



PROF. LUIGI P. BADANO



DR. K. PAPAPOPOULOS



2nd Day: Valvular assessment/Transcatheter interventions

- | | |
|-------------|--|
| 09:00-09:30 | 4D aortic valve and annulus assessment – TAVI preparation (lecture)
L. Badano |
| 09:30-10:00 | Workstation session V: AoV analysis
K. Papadopoulos |
| 10:00-10:30 | Mitral valve assessment (lecture)
K. Papadopoulos |
| 10:30-10:45 | Coffee break |
| 10:45-11:00 | Live session III: acquisition of MV by TTE
K. Papadopoulos |
| 11:00-13:00 | Workstation session VI: MV analysis
K. Papadopoulos
(4D zoom-full volume TTE and TOE, 4D AutoMVQ, Flexislice for VCA and MVA in mitral stenosis, Understanding DMR and FMR cases) |
| 13:00-13:45 | Lunch break (Live scanning on Vivid E95 during the break) |
| 13:45-14:15 | 4D Tricuspid valve assessment (lecture)
L. Badano |

UP-TO-DATE 4D ECHOCARDIOGRAPHY INTENSIVE HANDS-ON 4D TTE & TOE ECHO COURSE

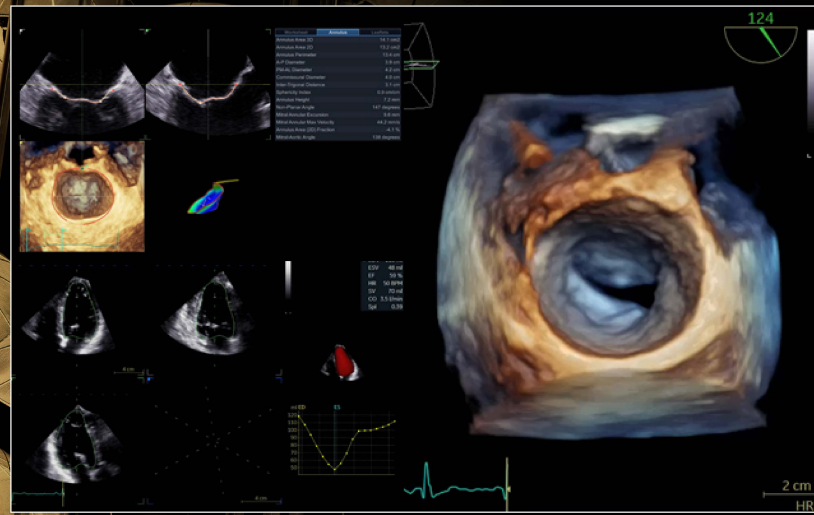
19-20 OCTOBER 2024

EUROPEAN INTERBALKAN MEDICAL CENTER

THESSALONIKI / GREECE



PCD
INVENTICS A.E. / Medevents.gr
T. 2310 474 400 / E. info@medevents.gr / W. www.medevents.gr
GNTD License: 0933E60000074600



COURSE DIRECTORS



PROF. LUIGI P. BADANO



DR. K. PAPAPOPOULOS

2nd Day: Valvular assessment/Transcatheter interventions

How to plan and guide Transcatheter Interventions:

- | | |
|-------------|--|
| 14:15-15:30 | Workstation session VII: TV analysis (4D zoom, Full volume, 4D AutoTVQ)
L. Badano |
| 15:30-16:00 | How to screen patients suitable for: PFO and ASD closure (lecture)
L. Badano |
| 16:00-16:30 | How to guide patients suitable for: PFO and ASD closure (lecture and workstation)
K. Papadopoulos |
| 16:30-16:45 | Coffee Break |
| 16:45-17:00 | How to screen and guide patients suitable for: LAA closure (lecture)
K. Papadopoulos |
| 17:00-17:30 | Tricuspid regurgitation: which patient should be treated and what are our transcatheter treatment options? (lecture)
L. Badano |

UP-TO-DATE 4D ECHOCARDIOGRAPHY INTENSIVE HANDS-ON 4D TTE & TOE ECHO COURSE

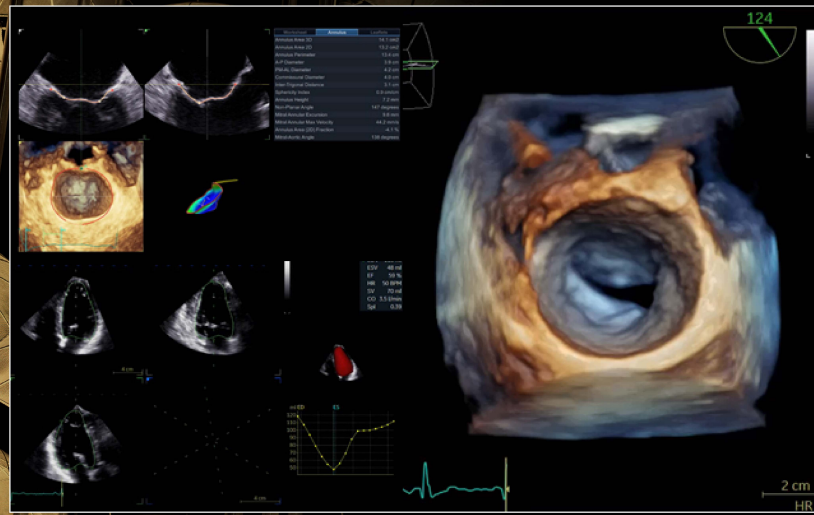
19-20 OCTOBER 2024

EUROPEAN INTERBALKAN MEDICAL CENTER

THESSALONIKI / GREECE



PCD
INVENTICS A.E. / Medevents.gr
T. 2310 474 400 / E. info@medevents.gr / W. www.medevents.gr
GNTD License: 0933E6000074600



COURSE DIRECTORS



PROF. LUIGI P. BADANO



DR. K. PAPAPOULOS



2nd Day: Valvular assessment/Transcatheter interventions

- 17:30-18:00 How to screen and guide patients suitable for: Mitral-TEER (lecture)
K. Papadopoulos
- 18:00-18:15 How to screen and guide patients suitable for valve-in-ring and valve-in-valve interventions (lecture)
K. Papadopoulos

End of course