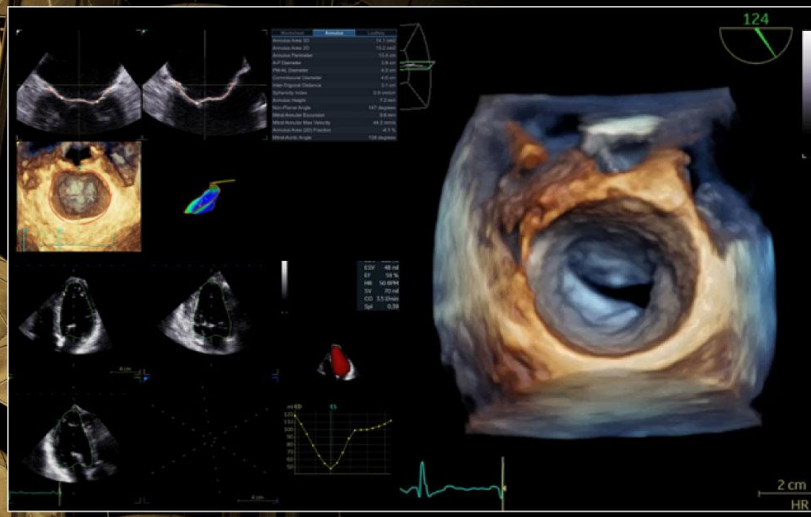


UP-TO-DATE 4D ECHOCARDIOGRAPHY INTENSIVE HANDS-ON 4D TTE & TOE ECHO COURSE

17-18 APRIL 2021

EUROPEAN INTERBALKAN MEDICAL CENTER
THESSALONIKI / GREECE



COURSE DIRECTORS



PROF. LUIGI P. BADANO



DR. K. PAPAPOULOS, FESC, FEACVI



PCO
INVENTICS A.E. / Medevents.gr
T. 2310 474 400 / E. info@medevents.gr / W. www.medevents.gr
GNTD License: 0933E6000074600



April 17th-18th 2021

Venue: European Interbalkan Medical Center, Thessaloniki, Greece

Course Directors: Prof Luigi Badano, Dr Konstantinos Papadopoulos

Aim of the course: This course addresses to all 4D echo users and aims at fully understand the best way to acquire and analyze patients using the 4D echocardiography.

Registration fee:

- **On-site hands-on registration:** includes education on EchoPAC workstation, lunches, coffees breaks, dinner on Saturday and advanced certificate of Education with CME credits. / Cost: 350 euros
- **Virtual hands-on registration:** includes education on virtual EchoPAC workstation platforms (remotely from your PC) and advanced certificate of Education with CME credits. / Cost: 350 euros
- **Join online registration:** includes online attendance of the course with the ability to interact but not hands-on training and basic certificate of attendance with CME credits. / Cost: 150 euros

* registration does not include transfer from and to airport and accommodation

Organized by University of Milano

PCO: Inventics A.E. – Medevents.gr www.medevents.gr/congress/4decho2

Correspondence:

Konstantinos Papadopoulos, MD, PhD, FESC, FEACVI

Mob: +306937435062

Email: papadocardio@gmail.com, papadopoulos@pericardium.gr

Course Program

1st Day: Chambers evaluation

- 08:00-08:30 Welcome: Connection of participants to EchoPAC
- 08:30-09:00 Basics of 4D echocardiography. How to apply the method in routine practice
- 09:00-10:00 *Workstation session I: Learn how to use optimize my 4D images in EchoPAC*
- 10:00-10:30 How to assess left ventricle and left atrium with 4D
- 10:30-11:00** *Coffee break*
- 11:00-11:30 *Live session I: LV acquisition and assessment*
- 11:30-13:30 *Workstation session II: LV/LA assessment (Multislice, Triplane, 4D AutoLVQ, 4D AutoLAQ, AFI LA)*
- 13:30-14:15** *Lunch Break*
- 14:15-14:45 How to assess left ventricle with 2D AFI, triplane AFI Myocardial work, 4D strain
- 14:45-16:15 *Workstation session III: LV assessment (triplane AFI-Myocardial work, 4D strain)*
- 16:15-16:30 4D Stress echocardiography. Feasibility and added value of the method
- 16:30-17:00** *Coffee break*
- 17:00-17:30 Evaluation of right ventricle by 4D echocardiography
- 17:30-17:45 *Live session II: RV acquisition*
- 17:45-19:00 *Workstation session IV: RV assessment*

2nd Day: Valvular assessment/Transcatheter interventions

- 08:30-08:45 4D Aortic valve assessment – TAVI preparation
- 08:45-09:30 *Workstation session V: AoV analysis*
- 09:30-10:15 Mitral valve assessment
- 10:15-10:30 *Coffee break***
- 10:30-10:45 *Live session IV: acquisition of MV by TTE*
- 10:45-13:00 *Workstation session VI: MV analysis
(4D zoom-full volume TTE and TOE, 4D AutoMVQ,
Flexislice for VCA and MVA in mitral stenosis,
Understanding DMR and FMR cases)*
- 13:00-13:45 *Lunch break***
- 13:45-14:30 4D Tricuspid valve assessment
- 14:30-15:30 *Workstation session VII: TV analysis (4D zoom, Full volume,
4D AutoTVQ)*

Transcatheter Interventions:

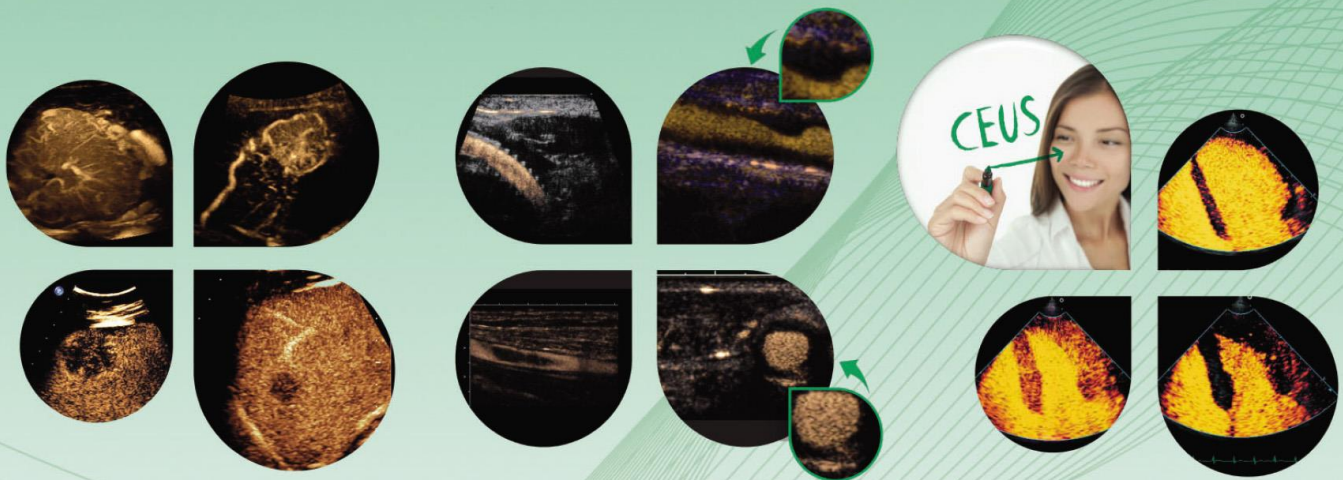
- 15:30-16:00 Assessment and guidance for ASD occlusion
- 16:00-16:15 Guidance for PFO occlusion
- 16:15-16:30 *Coffee Break***
- 16:30-17:00 Echo guidance for LAA occlusion
- 17:00-17:30 Selection criteria and echo-guidance for edge-to-edge mitral valve repair
- 17:30-17:45 Challenging case of MitraClip implantation
- 17:45-18:00 Challenging case of PASCAL implantation

End of course



SONOVue[®]
sulphur hexafluoride

Experience Real Time Diagnosis with Contrast Enhanced Ultrasound



CEUS in Liver Imaging

- To characterize focal liver lesions
- A free radiation technique
- No nephrotoxicity

CEUS in Vascular Imaging

- To increase the accuracy in detection or exclusion of abnormalities in cerebral, extracranial and peripheral arteries

CEUS in Cardiac Imaging

- Improves the endocardial border delineation
- Improves the assessment of cardiac wall motion



SonoVue[®] approved
for detection
of vesicoureteral
reflux



LIFE FROM INSIDE

Committed to Science,
Committed to You.[™]



Α. Πηγής 33 & Αναπήρων Πολέμου 6, 151 27 Μελίσσια, Αθήνα
Τ. 210 6199886 - www.leriva.com